



● ○ ● ●

BioBeat 50 Movers and Shakers in BioBusiness 2015



Thanks to our Partners

Founding Partner
**Entrepreneurship
Centre**



Innovation
FORUM

2015 Partner



Base of





**Steve Bates, CEO,
UK BioIndustry Association**

This year's report showcases just some of the brilliant female leaders in our sector who are playing a key role in driving the growth of UK bioscience. The sector faces critical challenges in securing bright, skilled staff with entrepreneurial flair and leadership élan. *50 Movers and Shakers in BioBusiness 2015* demonstrates that this talent is out there and I hope that by showing the range of opportunities to succeed on offer will help pave the way for the next generation of female talent.

If the UK is to build on its current level of success then it needs to attract and retain the best global talent to the sector. We need leaders who combine a depth of related skills and expertise in a single field, with the ability to collaborate across disciplines with experts in other areas and general management skills. Initial analysis of BIA members shows that approximately half of UK biotech member companies have no female representation on their boards and that in the last five years, women have featured very rarely in the appointment announcements of new CEOs in the sector.

These stats are a stark reminder that although the industry is moving forward, there is a real need to cast the net wider when recruiting and promoting staff. UK bioscience must also ensure that it offers opportunities that are going to attract the best talent. This can be achieved through encouraging greater global dynamism, innovations and learning; creating more job flexibility; building a stronger cluster so that changing jobs doesn't mean you have to move house and take your children to new schools; and have more porous walls between industry, the NHS and academia to get the cross fertilisation of skills and ideas essential for translation.

Congratulations to all those on this year's list and we look forward to watching your careers flourish as the UK bioscience industry continues to grow as a vibrant global cluster.



**Miranda Weston-Smith
BioBeat Founder**

The 2015 report identifies 50 inspirational women in biobusiness in the UK who are challenging the status quo to bring better health to people around the world. This year, amongst the 50, there are 18 Rising Stars, up from 10 last year. They are the young leaders, the ones to watch, who are inspiring the next generation and making a global impact.

We need new generation ways to develop and deliver medicines and healthcare as the global biobusiness sector undergoes rapid transformation. Increasing the domains of our knowledge with the visions and boldness of successful women brings creativity and new pathways for growth for us all. Women adopt different strategies for business growth from novel ways of building companies and working in teams to raising funds and attitudes to risk.

50 Movers and Shakers is by no means a definitive list, yet it draws attention to the dynamism of women in biotech who are re-setting our imagination for what we can achieve. The report includes women in companies, research, hospitals, finance and advisory roles.

I give many thanks to the Reviewers of this year's report: Dr Andy Richards CBE, Serial Biotechnology Entrepreneur and Business Angel, Dr Richard Seabrook, Head of Business Development, Innovations, The Wellcome Trust and Professor Heather Wallace, University of Aberdeen reviewed the senior nominations.

For the Rising Stars the Reviewers were: Dr Anne Dobrée, Head, Cambridge Enterprise Seed Funds, Dr Barbara Domayne-Hayman, CBO, Autifony and Chairman, Puridify, Dr Howard Marriage, Entrepreneur in Residence, Crick Institute and Edinburgh BioQuarter and Dr Marek Tyl, CEO, the Innovation Forum.

Looking ahead... If you would like to make a nomination for 2016, please email Miranda@mws-consulting.co.uk

Entrepreneurship Centre



To grow the economy, make an impact on the world and respond to the rapid changes in the biosector, we need movers and shakers with a diversity of skills, experience, and mindset. This report highlights 50 women who represent just that. BioBeat is an excellent forum where successful women are presented, showing the variety of career paths and achievements. A true inspiration

to both men and women!

It is with great pleasure and pride that we have supported BioBeat from its inception and to witness it grow and evolve, attract a following, and establish a reputation for being a forum for discussing cutting edge biobusiness. It is also a testament to the synergies being created within and beyond Cambridge Judge Business School that women that started on EnterpriseWISE (a women only enterprise programme for STEM women), and progressed through Accelerate Cambridge get recognised by BioBeat and others.



The Innovation Forum is immensely proud to be working with BioBeat. We are committed to supporting diversity of views and backgrounds and we are pleased to see the increasing role female leaders play in driving disruptive innovations forward. The women in this report have truly impressive leadership track records. They are at the forefront of their scientific fields, run companies, establish new ideas in start-ups and make policy.

They are truly inspirational for other innovators in health and biosciences.

At the Innovation Forum, we aim to stimulate the creation of interdisciplinary innovations by fostering interactions of people with diverse academic and industrial backgrounds at a global level. We promote the interaction between industry, policy-makers, academia and investors. Our conferences have become a melting pot where ideas have emerged, plans have been discussed, and start-ups have met investors. Our events create the perfect environment for disruptive innovation to come to life.



The Wellcome Genome Campus is pleased to host this year's BioBeat conference with its central theme of Translating Genomics into Biobusiness. The all female speaker line up responds to the aims of the Campus' Sex in Science programme which seeks to raise awareness of issues facing women in science. It is gratifying to see recognition for female scientists

from the Genome Campus in current and previous editions of 50 Movers and Shakers.

The Wellcome Genome Campus is home to some of the world's foremost institutes and organisations in genomics and computational biology. We bring together a diverse and exceptional scientific community in a culture and environment that fosters creativity and rewards bold, ambitious thinking. We are committed to delivering life-changing science with the reach, scale and imagination to solve some of humanity's greatest challenges.

Many thanks to the advisors, nominators and supporters who have made this report possible. They include:

Dr Linda Allan, University of Cambridge
 Dr Julie Barnes, Abcodia
 Steve Bates and colleagues, BioIndustry Association
 Tarquin Bennett-Coles, Euromedica
 Maina Bhaman, Imperial Innovations plc
 Kate Bingham, SV Life Sciences
 Lindsey Crosswell, EMBL-EBI
 Emerson Csorba, GenY
 Dr Darrin Disley and Richard Vellacott, Horizon Discovery plc
 Marcos Gallego Llorente and colleagues, Innovation Forum
 Dr Melanie Goward, Finance Wales Investments
 Theodora Harold, PsiOxus Therapeutics
 Rachel Holdsworth, Holdsworth Associates
 Orsolya Ihasz and Katharine Price, Entrepreneurship Centre, Cambridge Judge Business School
 Hanadi Jabado, Accelerate Cambridge, Cambridge Judge Business School
 Harriet Fear, One Nucleus
 Dr Jackie Hunter, BBSRC
 Dr Simon Kerr, Kerr Consult
 Dr Lisa Melton, Nature Biotechnology
 Dr Toby Norman, SimPrints
 Drs Richard Reschen and Gareth Smith, Isis Innovation
 Dr Thomas Weaver, Congenica
 Dr Clare Wilson, Royal Society of Chemistry
 Dr Julia Wilson, Wellcome Trust Sanger Institute
 Dr Sybil Wong

50 Movers and Shakers



The Rising Star signifies Movers and Shakers who are under 40

in BioBusiness 2015



Jelena Aleksic, Founder and CEO, GeneAdviser, Director, TReND in Africa

Jelena founded GeneAdviser in 2014 to improve access to genetic diagnostics for rare diseases. GeneAdviser is an online marketplace where clinicians worldwide can find and order genetic tests, leading to faster diagnosis for patients. With TReND in Africa, she's boosting capacity in natural sciences across Africa by training researchers in genetics and computational biology.

Jelena is also a founding director of the Cambridge Rare Disease Network, a community of rare disease researchers and advocates. A geneticist by training, Jelena's work improves standards and equality of access in genomic medicine.



Kate Bishop, Group Leader, The Francis Crick Institute

The problem Kate and her group are tackling is how to interfere with the replication of HIV in a cell. They are exploring how the enzyme SAMHD1 prevents viral DNA synthesis in white blood cells, and whether modulation of SAMHD1 could hinder the propagation of the HIV virus. She has negotiated a collaboration with GSK to screen compounds from their libraries against SAMHD1 and look for further molecular targets.

Previously, Kate was a Royal Society Dorothy Hodgkin Fellow and then a Wellcome Trust Career Development Fellow. She participated in the Royal Society MP pairing scheme that allows scientists and MPs to learn about each other's work.



Aisling Burnand MBE, CEO, Association of Medical Research Charities (AMRC)

Aisling's role at AMRC is to champion the voice of the medical research sector and key to this is demonstrating the huge positive impact research charities have on our health and wellbeing. Placing the voice of the patient at the heart of medical research and amplifying their needs is vital in order to bring about change. The fact many new treatments are not routinely adopted and given to patients once they have been approved is a travesty.

Aisling has worked in the corporate and not-for profit sector and when not running AMRC, she coaches and mentors existing and next-generation leaders.



Julie Barnes, CEO, Abcodia

In 2015, Julie secured £5.25 million of venture financing to support the commercialisation of Abcodia's innovative ovarian cancer screening test and bring it to the market. Julie was part of the founding team of Abcodia, leading the vision to enhance how biomarkers are used to detect cancer earlier.

After working in big pharma for 15 years, Julie joined the world of biotech. She is passionate about translational science that advances innovative ideas into products and services that make a real difference in a clinical setting. A key motivation for leading Abcodia comes from the loss of Julie's mother to colorectal cancer at the young age of 43.



Jeanne Bolger, Vice President, Venture Investments, Johnson & Johnson Innovation

Jeanne is responsible for investing and managing portfolio investments in pharmaceutical and biotechnology in Europe, in areas of strategic interest to J&J. She works directly with entrepreneurs in her portfolio companies to help them de-risk their innovative projects, not just with the help of J&J's capital but also with advice on development and pathways to commercialisation.

Jeanne has worked in the pharmaceutical industry for 27 years and has a broad and extensive background in R&D, commercial and business development. She received her medical degree from University College Dublin and holds diplomas in Child Health (NUI) and Finance and Accounting (ACCA).



Millie Clive-Smith, Co-Founder and Design Strategy Lead, Eva Diagnostics

Millie, and co-founder Toby Baser-Fisher, have built a multidisciplinary team over the last year to provide a point of care, affordable and highly accurate, finger prick diagnostic for anaemia. AnemiPoint also has in-built connectivity to transmit anonymised data to inform health programme management. Trials of the prototype will begin in Sub-Saharan Africa this year. The company won the £100,000 first prize in the OneStart 2014 competition and in 2015 secured further funding from Innovate UK's Smart award, Biomedical Catalyst and the Royal Academy of Engineering.

Millie has a background in innovation design engineering and physics.

50 Movers and Shakers



**Professor Dame Sally Davies FRS,
Chief Medical Officer for England**

Dame Sally is the UK Government's principal medical adviser. She also leads the National Institute for Health Research with its £1 billion health research budget. Dame Sally advises on research strategy around the world including being a member of the International Advisory Committee for A*STAR, Singapore. She has led the UK and WHO work on Anti-Microbial Resistance (AMR) including advocating for the Longitude prize and to the public with a book plus TED talk, 'The Drugs Don't Work'.

Dame Sally is a member of the World Health Organisation (WHO) Executive Board. Dame Sally is conferred as Emeritus Professor at Imperial College London and was elected a Fellow of the Royal Society in 2014.



Kym Denny, CEO, hVIVO plc

Kym is leading the revolution in healthcare to put humans at the heart of disease modelling for acceleration of drug development and discovery in respiratory and infectious diseases, including the common cold, influenza and asthma. She oversaw the company's flotation on AIM in 2012.

Earlier Kym worked in clinical trials companies in the UK and US and has over 15 years' senior management experience of international clinical trials including Phase I-IV clinical operations, drug safety, data and site management across a range of therapeutic areas including infectious disease and respiratory, CNS, oncology and women's health.



Rising Star

Clare Doris, COO, Aquila BioMedical

Aquila provides bespoke preclinical assays in the fields of immunology, regeneration, neuroscience and more recently immunoncology. Clare joined Aquila in 2011 at the point of creation and facilitated the spin out from the University of Edinburgh. In the early days of Aquila, Clare played an instrumental role in securing R&D grants, growing networks, business development, service commercialisation, as well as building the operational team. She has used her experience of the contract research industry to identify gaps in the market, sense trends and build the company's service portfolio.

Clare previously worked at Quintiles and Aptuit and has a background in neuroscience.



Rising Star

**Inga Deakin, Healthcare Ventures
Associate, Imperial Innovations plc**

Inga works to demystify VC investment for early stage companies. She has been involved in Imperial Innovations' investments into Ieso Digital Health and Puridify, and now serves on the boards of both companies. Ieso delivers pioneering online psychological therapy and Puridify is developing novel bioprocessing technologies to improve manufacturing efficiency for biotherapeutics.

Previously, Inga worked in business development at the Royal Veterinary College/London Bioscience Innovation Centre, completed her DPhil in neuroscience at the University of Oxford and read Natural Sciences at the University of Cambridge.



**Professor Anna Dominiczak OBE, MD,
FRCP, FRSE, FMedSci, Regius Professor
of Medicine, Vice Principal and Head of
College of Medical, Veterinary and Life
Sciences, University of Glasgow**

Anna is at the forefront of developing Scotland's activity in precision medicine, working with the National Health Service and industry partners to form a unique triple-helix partnership that aims to progress research to benefit wider society.

One of the world's leading cardiovascular scientists and clinical academics, Anna's major research interests are hypertension, cardiovascular genomics and precision medicine, with research income in the last three years totalling over £30 million.



Rising Star

**Mary-Jane Elliott, Managing Partner
and Co-Founder, Consillium Strategic
Communications**

Mary-Jane co-founded Consillium Strategic Communications in 2013 having led the management buy-out from M:Communications, which she established. The way in which healthcare companies manage their reputations and differentiate their science is paramount to their success along with conveying the right message to their key stakeholders – patients, physicians, employees, investors, political.

Mary-Jane started life as a lab bench scientist, and in her career has advised on a wide range of high profile IPOs, secondary fundraisings, private equity placements, M&A transactions, crisis communications, clinical data and product launches.

in BioBusiness 2015



Julia Fan Li, Senior Vice President, Seven Bridges Genomics

Julia leads Seven Bridges' efforts in the UK to build self-improving systems to analyse millions of genomes. Prior to Seven Bridges, she helped launch the pioneering \$108 million Global Health Investment Fund in 2013 that focuses on accelerating biomedical innovation in vaccines, drugs, diagnostics and devices for diseases which disproportionately affect poor countries. The fund has thus far invested in tuberculosis, cholera and onchocerciasis (river-blindness).

Julia completed her PhD at the University of Cambridge as a Gates Scholar and has a background in finance and immunology across four continents.



Liberty Foreman, CEO and Co-Founder, BeamLine Diagnostics, PhD candidate, University College London

In late 2014, Liberty and co-founder, Katie Oliver, formed BeamLine Diagnostics to enable point-of-care pre-cancer detection and revolutionise the biopsy screening workflow. Liberty developed the pre-cancer detection algorithm behind BeamLine. It works by analysing data produced by a commercially available infrared spectrometer to quantify biochemical changes that occur in tissues during disease. BeamLine was a 2015 OneStart finalist. In summer 2015, they closed their first seed round of £50,000.

Liberty is in the final year of her PhD at UCL and has a fellowship from the Software Sustainability Institute for promoting collaboration between clinicians and statisticians.



Susan Galbraith, SVP and Head of Oncology iMED at AstraZeneca

Susan's passion for developing oncology drugs is matched only by her passion for patients. The ambition of Susan and her team is to one day eliminate cancer as a cause of death. 'Open innovation' is central to Susan's approach and she continually looks to make her organisation more 'porous' to the external environment; academia, industry and governments. She joined the board of Horizon Discovery plc as a non-Executive Director in June 2014.

Susan trained as a clinical oncologist after studying medicine at the Universities of Manchester and Cambridge and has over 20 years' combined academic and industry experience.



Harriet Fear, CEO, One Nucleus and UK Business Ambassador

Harriet joined One Nucleus in 2009. She has transformed the regional biotech initiative into the largest not-for-profit membership organisation for life science and healthcare companies in Europe and the company now has a global footprint. She has established formal collaborations with the four leading membership groups in the US, as well as having forged strong relationships across all continents for member benefit.

In 2014 the Prime Minister appointed Harriet a UK Business Ambassador to promote UK life science and healthcare. She is also a Founder Member of United Life Sciences, which brings together UK organisations to work on matters of national member interest.



Flic Gabbay, Senior Partner, TranScrip

Flic champions environments that facilitate development of medicines with significant social impact. In 2008 she founded TranScrip, to work collaboratively with biotechs, pharmas and the public sector, bringing disruptive approaches to funding, development, and launch of products (seven new drugs licensed including two orphans).

Always striving for change, Flic joined pharma when few industry standards existed and drove initiatives including founding of FPM RCP(UK) to formalise physician training. After senior roles in pharma she founded a CRO, bought by PPD, and held several CEO and Board positions in biotech.

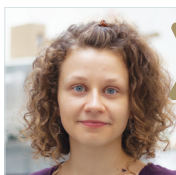


Jemma Gatliff, CEO and Co-Founder, Keregen

Jemma and her co-founders, Nikolaos Georgakopoulos and Dr Geoff Wells, UCL School of Pharmacy, founded Keregen in 2015 to bring new molecular technology to slow or stop the progression of Parkinson's disease. The technology disrupts the degeneration of brain cells that cause the slow movements associated with Parkinson's, and is predicted to have potential across other indications. Keregen won the 2015 Europe OneStart prize of £100,000 to begin product commercialisation and development.

Jemma is an entrepreneur and researcher specialising in mitochondrial function and neurobiology.

50 Movers and Shakers



Rising Star

Alexandra Grigore, Co-Founder and CTO, SimPrints

Alexandra co-founded SimPrints, a pioneering technology company that is delivering better medical care in some of the most challenging conditions on the planet. SimPrints is linking patients in developing countries to their medical records through low-cost, wireless fingerprint sensors. Alexandra ran the recent field test of scanners in Bangladesh, which showed industry standard accuracy at a fraction of the cost. ARM plc, the Gates Foundation, and UKAID back the company.

With a PhD in nanoscience, Alexandra previously worked at the Dutch Foundation for Fundamental Research on Matter and the Max Planck Institute for Biochemistry.



Edith Hessel, VP and Head of Refractory Respiratory Inflammation Discovery Performance Unit, GSK

Throughout her career, Edith's choices have been guided by her passion for drug discovery in which she puts the patient at the centre. It is also her strong belief that excellence in drug discovery begins with the development of the scientists in her lab. Edith has pioneered innovative approaches to target discovery for chronic obstructive pulmonary disease, making use of phenotypic screening in patient-derived cells. She and her team closed a deal with FivePrime Therapeutics (San Francisco, CA) in 2012 that is now instrumental in driving the discovery of novel therapeutic targets.

Edith completed a PhD in the Netherlands, a PostDoc at DNAX Research Institute (California), and is an acknowledged expert in inflammation and respiratory diseases.



Anne Hyland, CFO, Kymab

Anne oversaw the close of a \$90 million Series B funding round in May 2015 which will help convert Kymab's broad pre-clinical pipeline to a valuable and rich clinical pipeline. Anne manages the finances where both focus and discipline are required given the number of opportunities Kymab has. 'No mice on earth have more human DNA than the Kymouse™ which has the potential to be a \$50 billion + mouse', Anne comments.

Anne is also Chair of the Audit Committee of Elementis plc and a trustee of Sustrans which looks after the National Cycle Network. Earlier she was CFO at BBI Diagnostics plc, Vectura plc, and held senior roles at Celltech plc and Medeva plc and KPMG.



Rising Star

Charlotte Hardy, Medicinal Chemistry Investigator in Respiratory Therapy Area, GSK

Charlotte has made significant contributions to the discovery of three clinical candidates as potential medicines for the treatment of distressing conditions such as Huntington's disease, asthma, allergic rhinitis and chronic obstructive pulmonary disease. She is a co-author on 10 publications and 14 patents and in 2011, was recognised by the European Federation for Medicinal Chemistry as runner-up, Young Medicinal Chemist in Industry.

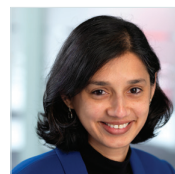
She is the Royal Society of Chemistry 2015 Young Industrialist of the Year. Charlotte firmly believes successful drug discovery relies on excellent collaboration between project members, who each bring unique skills and expertise.



Sarah Howell, CEO, Arecor

Sarah joined Arecor in 2011, and was appointed CEO in 2015. Over that time, Sarah has been instrumental in providing vision and leadership to transform Arecor from a research based business in to a self-sustaining commercial leader focused on enabling superior biopharmaceuticals through innovative formulation technology. In addition to working in partnership with leading pharmaceutical companies under a technology licensing model, Arecor is now also developing an internal portfolio of superior biosimilar products to take in to the clinic.

Prior to Arecor, Sarah held senior roles at BTG and UCB, starting her career at GSK.



Vaishali Kamat, Head of Digital Health, Cambridge Consultants

Vaishali initiated Cambridge Consultants' entry into Digital Health back in 2009 – and established the product design and development firm's leadership in this rapidly evolving sector. A string of innovative projects – from miniature wireless implants to smartphone-based diagnostic tests – has since transformed the lives of patients around the world. The latest breakthrough from Vaishali's team – an energy-harvesting smart insulin pen concept – has just won a prestigious Red Dot Design Award.

Vaishali has more than 15 years' experience in medical device design, with a variety of published articles to her name, and is a named inventor on several patents.



Magdalena Kulbat, Co-Founder and Managing Director, TeMAG Pharma

Magdalena co-founded TEMAG Pharma in 2008 to provide rapid manufacturing of medicines for special patient requirements. While the specialist formulations industry has declined over the past few years, TEMAG Pharma has continued to grow. TEMAG is an MHRA approved pharmaceutical company and is now moving into the clinical trials market. The company started with just two ambitious pharmacists and now has 27 members of staff.

Magdalena is a registered UK pharmacist who has worked in both primary and secondary care units so she understands the needs and requirements of patients.



Helen Lee, Director of Research, Department of Haematology, University of Cambridge and Founder, Diagnostics for the Real World (DRW)

Helen founded Diagnostics for the Real World in 2002 to make widely available breakthrough point-of-care diagnostics for tackling some of the world's most serious infectious diseases. She and her team in the Diagnostics Development Unit at the University of Cambridge have developed signal amplification technologies for rapid and reliable tests for chlamydia, hepatitis and HIV. DRW's SAMBA machine, a nucleic acid-based 'test and treat' diagnostic for HIV, was launched in Uganda in autumn 2014 and won a design award in 2015. DRW is based in Cambridge, UK and California and is Helen's fourth start up.

She has worked in academia and industry and has received numerous awards.



Priya Mande, COO, PsiOxus Therapeutics

Priya is one of the original members of the PsiOxus team, having joined in 2009. She has constructed the business framework for the company's products in immuno-therapy which include cancer-killing viruses and pipeline products. She is responsible for portfolio management, legal, regulatory compliance, quality, intellectual property and information systems for this new generation of immuno-oncology medicines.

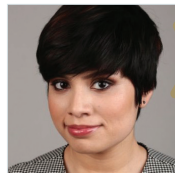
With 20+ years across GSK, Pfizer and biotech, she has been described by colleagues as 'relentless' in her pursuit of driving assets forward. Her passion comes from 'finding a cure for cancer, which the new paradigm of oncology innovation now makes a real possibility'.



Pamela Learmonth, Director of Public Affairs and Communications, BioIndustry Association (BIA)

Pamela is developing fresh approaches for public and policy advocacy for the bioscience sector. She is leading the BIA's international engagement on the reform of the Patent Box tax relief to ensure that this remains an important foundation for attracting and keeping innovative companies in the UK and that the revised Patent Box remains part of a wider tax and fiscal environment that supports the life sciences sector. She is also championing a new priority for the BIA to celebrate the success of the sector.

Pamela was previously CEO of the Broadband Stakeholder Group, and started her career in public affairs consultancy.



Ipshita Mandal, Head of Business Development, Bactevo, Co-Founder and President, Global Biotech Revolution

Ipshita is leading the business development strategy for Bactevo's TarGET platform. TarGET generates multiple mutant libraries from microbes in nature, conducts phenotype based microfluidic screens, and feeds in bioinformatics and *in silico* modelling to discover, select and produce natural product drugs for intractable disease targets. In 2012, Ipshita founded Global Biotech Revolution, a student-led global biotechnology think tank for inter-generational debate.

She grew up in India, Kenya, New Zealand and Singapore and has won many awards in grand challenges debate, entrepreneurship and innovation.



Fiona Marshall, Founder and CSO, Heptares Therapeutics, Executive Vice President and CSO Sosei Group

Fiona founded Heptares in 2007 as an industry pioneer in structure-based drug design, which has led to a pipeline of innovative medicines for the treatment of Alzheimer's disease, schizophrenia, ADHD and migraine. In 2015 Heptares was acquired by the Japanese biopharmaceutical company Sosei for up to \$400 million.

Fiona has over 25 years' experience in drug discovery. She is Vice-chair of the Wellcome Trust Seeding Drug Discovery Committee and on the Board of Trustees for Alzheimer's Research UK. She received the 2012 WISE Women of Outstanding Achievement Award in Innovation and Entrepreneurship and the 2015 RSC Malcolm Campbell Memorial Award Medal.

50 Movers and Shakers



Ruth McKernan CBE, CEO, Innovate UK

Ruth took up the role of Chief Executive at Innovate UK from 1 May 2015. After working at the interface of science and business in the pharmaceutical industry, Ruth is inspired by the opportunity to translate great science into new commercial products which can make a difference to everyday lives. She sits on the Science, Industry and Translation Committee of the Royal Society and Cancer Research Technology's Board, and is a Council Member for the MRC.

As a scientist Ruth is best known for her research on ligand-gated ion channels, with over 120 publications and 15 patents. She is also an award-winning science writer and author and in 2013 was awarded a CBE for services to Business, Innovation and Skills.



Professor Kim Midwood, Kennedy Institute of Rheumatology, University of Oxford and Founder, Nascient

Kim's research focuses on how the cellular microenvironment defines the immune response. She uses a multidisciplinary approach incorporating structural, biochemical, molecular, proteomic and epigenetic tools to find new diagnostics and therapeutics to control inflammation. Kim founded Nascient in 2012 to develop new drugs for inhibiting chronic inflammation in diseases such as rheumatoid arthritis. She also has a long history of consulting for biotech companies.

Kim co-founded two companies, CRG and Orthobond, while she was a post-doctoral researcher at Princeton University. She has won numerous scientific awards.



Magda Papadaki, Lead Technologist interim, Regenerative Medicine and Cell Therapies, Innovate UK

Magda runs the £8 million 2015 Innovate UK competition in Regenerative Medicine to fund business-led discoveries alongside enabling infrastructure that will help UK companies progress their innovations to investable propositions and turn the UK into a global leader in cell therapies.

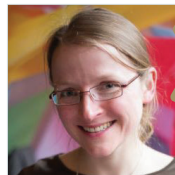
Earlier she worked at the MIT Center of Biomedical Innovation on the Adaptive Licencing global policy reform, and Novartis leading the Consumer Health Regulatory Affairs functions in Greece and Cyprus. She is one of the Young Global Leaders in Innovation & Entrepreneurship for the Chicago Center for Healthcare Innovation.



Marivi Mendizabal, Head of Global R&D Imaging, GE Healthcare

Marivi pursues her vision to deliver better diagnostics for neurodegeneration, cancer and cardiovascular diseases. Her initiatives and pipeline are expanding to growth regions such as China. Marivi has transformed the portfolio within the business and established an open innovation model delivering the next generation diagnostics via partnership models with academia and therapeutic companies.

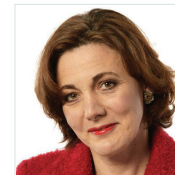
Marivi joined GE Healthcare in 1995 and has held several positions in research, product and portfolio management.



Fiona Nielsen, Founder and CEO, RePositive, Founder and CEO, DNAdigest

Fiona founded RePositive to speed up genetic diagnostics and research through efficient access to large and complex data from all over the world. The company raised £300,000 in 2015 to develop the platform for collaborative data sharing. RePositive was spun out from the charity DNAdigest which organises workshops, hackathons, events and activities to increase engagement and promote efficient mechanisms for genetics data sharing.

Fiona's background is in bioinformatics, genetics research, startups, web development, photography and teaching, and she speaks five languages.



Vivienne Parry OBE, Writer and Broadcaster, Head of Engagement, Genomics England

An acclaimed science writer and broadcaster, Vivienne has a reputation for being able to explain complex science in an understandable way. This led her to her part time role as Head of Engagement at Genomics England, which is delivering the 100,000 Genomes Project. Earning and maintaining the trust of the public, particularly in relation to the use of genomic data, is critical to the future of precision medicine.

Vivienne has presented Tomorrow's World, been a columnist for The Times and the News of the World and continues to make a wide range of films and programmes, especially for Radio 4.

in BioBusiness 2015



**Professor Sharon Peacock CBE,
FMedSci, Director, Bloomsbury
Research Institute**

Sharon is championing the use of rapid microbial genome sequencing in diagnostic and public health microbiology. Her goal is to introduce benchtop sequencing platforms and automated analysis tools to strengthen outbreak investigations and improve individual patient prescribing. She is also using sequencing technologies to understand reservoirs of antimicrobial resistance and transmission routes of clinically significant resistance to humans, as a forerunner to evaluating the impact of targeted interventions.

Sharon trained as a nurse, doctor and clinical microbiologist. For seven years she was head of bacterial diseases research at the Wellcome Trust Overseas Programme in Thailand.



**Brenda Reynolds, CEO and
Founder, Calchan**

Brenda founded Calchan as a virtual company in 2011, spinning it out from Convergence. Now in 2015, the company has significant funding to develop its novel compounds to treat pain and inflammation. Blockers of calcium-channels for neuropathic pain have long been sought to change the paradigm in pain treatment, and Calchan has a promising compound in Phase II clinical trials in addition to a novel Ask1 kinase inhibitor in preclinical development.

A strong believer in the flexibility of biotech organisations, Brenda earlier co-founded Powdermed, divested it to Pfizer, and managed projects for multinational companies.



**Professor Blanca Rodriguez,
Department of Computer Science,
University of Oxford**

Blanca is creating mathematical and computer models of the human heart to understand the differences in heart function between individuals, susceptibility to disease and the efficacy of therapies. She also works with industry and regulatory authorities to reduce the use of animal testing of new medicines.

Blanca is an engineer by training and is now developing the interface between computer-based modelling and simulation and medical sciences, such as cardiology and pharmacology, to accelerate research and improvements in patient diagnosis and treatment.



**Jo Pisani, Partner,
PricewaterhouseCoopers**

Jo leads the UK Pharma consulting business for PwC and assists clients across the lifesciences industry in developing strategies that embrace future trends and deliver improved health outcomes. She is a leading author on PwC's pharma 2020 thought leadership series – a forward view on global issues in the sector and is a regular commentator on key industry issues such as digital, emerging markets and biosimilars. As an advisory board member for MedCity she influences the development of UK lifesciences.

She has 13 years of industry experience in pharmaceuticals and energy with BP and GSK. Jo is a chartered engineer.



**Professor Dame Carol Robinson, DBE,
FRS, FMedSci, Royal Society Research
Professor and Dr Lee's Professor of
Chemistry, University of Oxford**

Dame Carol is renowned for pioneering the use of mass spectrometry for her research into the 3D structure of proteins, techniques initially considered controversial. Her research into membrane protein complexes helps us understand the binding of small molecules within cells which may have a wide range of applications, for example, medicines to treat cancer, schizophrenia and drug dependence.

Dame Carol is the 2015 L'Oréal-UNESCO for Women in Science European Laureate. After leaving school, she studied part-time over 7 years to get a degree from the Royal Society of Chemistry and a PhD from the University of Cambridge.



**Beatriz San Martin, Partner,
Intellectual Property, Fieldfisher**

Beatriz is an intellectual property specialist with a focus on the life sciences and her work centres on dispute resolution. She also advises on intellectual property and policy making in regenerative medicine and gene editing in connection with how current laws should be applied or changed. She is a member of the UK BioIndustry Association Cell Therapy and Regenerative Medicine Advisory Committee.

Beatriz joined Fieldfisher in 2004 and became a partner in 2013. She was a scientist prior to pursuing a legal career, with a degree and a Wellcome Trust PhD and post doc from the University of Cambridge specialising in developmental biology.

50 Movers and Shakers



Denise Scots-Knight, CEO and Co-Founder, Mereo BioPharma

Denise co-founded Mereo in March 2015. In July 2015 the company raised \$118 million to acquire and rapidly develop innovative medicines, mostly in rare and specialist diseases, to transform patient health and quality of life. Mereo has acquired a portfolio of three clinical-stage development programmes from Novartis Pharmaceuticals. They are a monoclonal antibody to treat Brittle Bone Disease, a kinase inhibitor against chronic pulmonary obstructive disease (COPD), and an aromatase inhibitor for the treatment of obese men with the aim of normalising testosterone levels.

Denise has global experience of biotech leadership, finance and R&D management.



Christine Soden, CFO and Non-Executive Director

Christine works with pharmaceutical and medtech companies on financial planning to accelerate their growth as their business models change. 'Effectiveness of boards in understanding the impact of financial decisions on the future is key to their making this transition successfully. Pharma and medtech can learn from each other', says Christine. She is Chief Financial Officer of Acacia Pharma, and a Non-Executive Director of Fertility Focus, Electrical Geodesics and Tower Cold Chain Solutions.

She has a degree in Mathematics from Durham University and is a Chartered Accountant.



Rising Star

Kylie Vincent, Associate Professor of Chemistry, University of Oxford

Kylie has developed a new biocatalysis platform for producing pharmaceutical molecules more cheaply and with less waste. The technology, HydRegen, recycles the expensive enzyme cofactor NADH, separates and recovers enzymes and so overcomes major barriers that are holding back the use of enzymes as selective catalysts in the production of complex chemicals. HydRegen won the Royal Society of Chemistry's 2013 Emerging Technologies Competition and in 2015 secured major translational funding from Innovate UK's Industrial Biotechnology Catalyst.

Kylie joined the University of Oxford's Department of Chemistry in 2002 after completing a PhD in Chemistry at the University of Melbourne.



Susan Searle, Portfolio Non-Executive Director

Susan is the Chair of the £800 million Woodford Patient Capital Trust plc, launched in 2015 to invest in early stage biotech and healthcare companies and so bridge the research – commercialization gap. In 2014, Horizon Discovery plc appointed her a Non-Executive Director. She is also a Non-Executive Director of Benchmark Holdings plc, Mercia Technologies and QinetiQ plc.

She co-founded Imperial Innovations Group plc, leading as CEO from 2002 to 2013. Susan sits on the Advisory Board for the Technology Strategy Board's Emerging Technologies Group, and is a Trustee of Fight for Sight.



Professor Dame Janet Thornton CBE, FRS, Professor and Director Emeritus, European Bioinformatics Institute

Dame Janet is one of the world's leading researchers in structural bioinformatics. The goal of her group's research is to understand more about proteins, their structure and evolution. From 2001-2015 Janet was Director of the European Bioinformatics Institute. She played a key role in establishing ELIXIR, the pan-European infrastructure for biological data, from its inception in 2001. She comments, 'My approach to research is to work collaboratively to get the best from everyone and to reach an optimal outcome'.

Dame Janet studied physics before turning to biology. She is a Foreign Associate of the US National Academy of Sciences.



Elaine Warburton OBE, CEO and Co-Founder, QuantuMDx Group

QuantuMDx is developing Q-POC™, a handheld molecular diagnostic lab, that will deliver precise diagnostics, at the patient's side in under 20 minutes. With the recent outbreak of Ebola and the ongoing global battle against drug resistance, the need for rapid, accurate and actionable diagnostics is ever more acute. Q-POC™ will enable health workers to perform complex laboratory standard testing at the touch of a button, giving patients even in the most remote areas access to gold-standard healthcare.

Elaine is an entrepreneur with over 25 years' healthcare and biotechnology experience, with an eclectic background in nursing, genetics, accounting and running hospitals.

in BioBusiness 2015



Keren Winmill, Chair & CEO, Trakcel

Keren is a founding member of South Wales-based TrakCel, a company revolutionising the regenerative medicine industry with innovative technology that manages scale-up and scale-out of the complex supply chain, allowing therapies to be delivered safely and effectively to patients.

Previously, Keren completed management buyout initiatives at Penn Pharmaceutical and Biotec Services where she was CEO.



Professor Eleftheria Zeggini, Wellcome Trust Sanger Institute

'It is widely accepted that, in the area of complex genomic trait association studies with disease, technology is in danger of outstripping our capacity to analyse and interpret the results obtained.' Ele is working to change that. She and her group carry out large-scale studies to investigate the genetic architecture of complex traits, such as type 2 diabetes and osteoarthritis, obesity and related metabolic diseases, and analyse and interpret the data.

Ele is a human geneticist with a background in biochemistry.



50 Movers and Shakers

BioBeat14 Moments

Join the growing community:



@BioBeatUK



LinkedIn: BioBeat

www.mws-consulting.co.uk



in BioBusiness 2015



Photos on this page ©Alan Bennett/Media Imaging Solutions



BioBeat **50** Movers and Shakers in BioBusiness 2015

